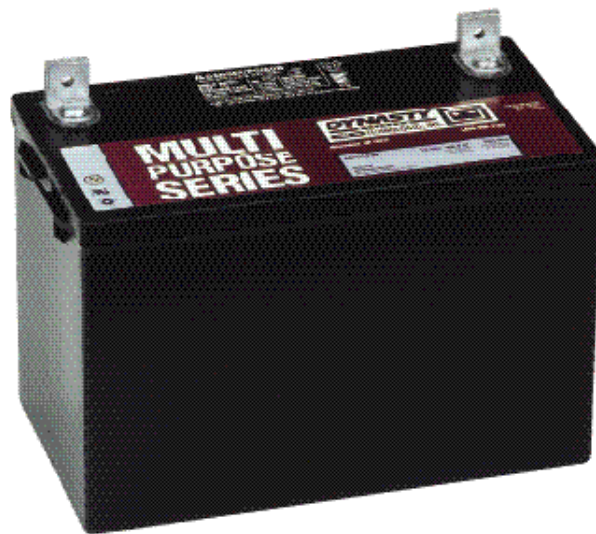


MULTI PURPOSE SERIES



Valve Regulated Battery Designed for Uninterruptable Power Supply (UPS), Emergency Lighting, Communication, General Purpose and Other Float Service Applications.

MPS12-88

**VALVE REGULATED
LEAD ACID BATTERY
FOR STANDBY POWER
APPLICATIONS**

**12V 88 AH @ 20 HR RATE,
12V 285 WATTS/CELL @
15 MIN RATE**

FEATURES

- Robust plate for extended life.
- Flame-arresting one-way pressure-relief vent for safety and long life.
- Durable polypropylene container and cover.
- Thermally welded case-to-cover bond to eliminate leakage.
- Absorbent Glass Mat (AGM) technology for efficient gas recombination of up to 99% and freedom from electrolyte maintenance.
- UL-recognized component.
- Multicell design for economy of installation and maintenance.
- Can be used in any orientation. Upright, side, or end mounting recommended.
- Not restricted for air transport – Complies with IATA/ICAO Special Provision A67.
- Not restricted for surface transport – classified as non-hazardous material as related to DOT-CFR Title 49 parts 171-189.
- Not restricted for water transport – classified as non-hazardous material per IMDG Amendment 27.
- Computer designed lead, low calcium alloy grid for minimal gassing and ease of recycling.

12 Volts – 88 Ampere Hour Capacity @ 20 Hour Rate

Ampere Hour Capacity to 1.75 Volts per Cell @ 77°F (25°C)

Discharge in Hours	1.00	2.00	3.00	4.00	5.00	6.00	7.00	8.00	10.00	12.00	20.00	24.00	72.00	100.00
Amp-Hr Capacity	54.3	62.0	67.6	71.0	74.0	76.0	77.5	79.0	81.4	83.6	88.0	88.4	90.9	92.0

C&D Technologies, Inc.

DYNASTY Division

900 East Keefe Avenue

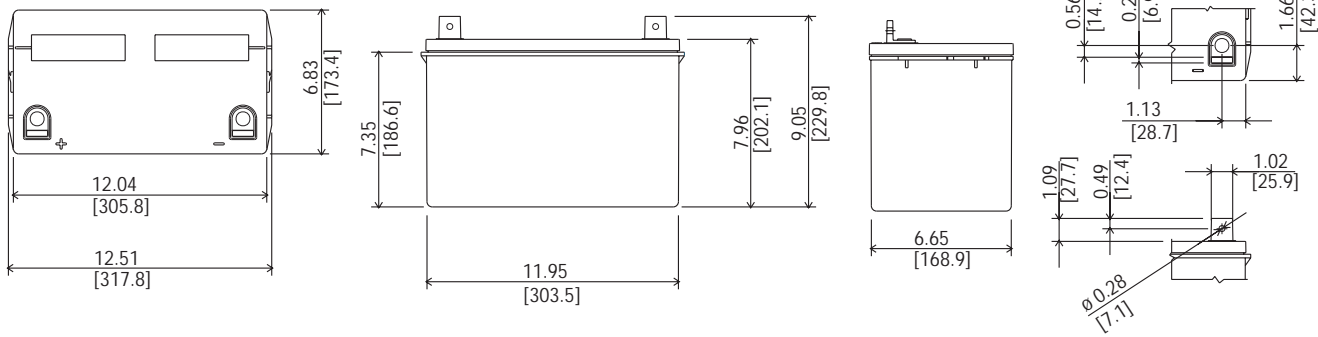
Milwaukee, WI 53212

Phone: 800-396-2789

Fax: 414-961-6506



MPS12-88



MPS12-88 – Specifications

*All dimensions in inches and (millimeters). All dimensions are for reference only.
Contact a C&D Representative for complete dimensional information.

Cells Per Unit	Voltage Per Unit	Weight	Electrolyte	Maximum Discharge Current	Short Circuit Current	Ohms Imped. 60 Hz (Ω)
6	12.84	64 lbs. 30 kg	Absorbed H ₂ SO ₄ SG = 1.300	800 Amps	3300 Amps @ 0.1 sec.	0.0040 Ohms
Capacity		285 watts per cell at the 15 minute rate to 1.67 volts per cell at 77° F (25° C). 88.0 Ah @ 20 hr. rate to 1.75 volts per cell @ 77° F (25° C) 78.2 Ah @ 10 hr rate to 1.80 volts per cell @ 20° C (68° F)				
Operating Temperature Range		Discharge; -40° F (-40° C) to +160° F (71° C). Charge; -10° F (-23° C) to +140° F (60° C) (with temperature compensation)				
Recommended Operating Temperature Range		+74° F (23° C) to +80° F (27° C)				
Float Charging Voltage		13.5 to 13.8 VDC/unit Average at 77° F (25° C).				
Recommended Maximum Charging Current Limit		C/5 amperes (17.6 amperes @ 100% depth of discharge) @ 20 hour rate				
Equalization and Cycle Service Charging Voltage		14.4 to 14.8 VDC/unit Average at 77° F (25° C).				
Maximum AC Ripple (Charger)		0.5% RMS or 1.5% P-P of float charge voltage recommended for best results. Maximum AC ripple voltage allowed = (4% P-P) Maximum AC ripple current allowed = 4.4 amperes rms (C/20)				
Self Discharge		Dynasty MPS batteries may be stored for up to 6 months at 77° F (25° C) and then a freshening charge is required. For higher temperatures the time interval will be shorter.				
Accessories		Inter unit connectors, racks and cabinet systems are available.				
Terminal		"L" terminal with 0.28" clearance hole to accept 0.25" (6mm) bolt.				
Terminal Hardware Initial Torque		65 in.-lbs. (7.35 n-m).				
Terminal Hardware Annual Retorque		52 in.-lbs. (5.88 n-m).				

Constant Power Discharge Ratings – Watts Per Cell @ 77°F (25°C)

Operating Time to End Point Voltage (in minutes)

End Point Volts/Cell	5	10	15	20	30	40	45	50	60	90
1.75	460	340	270	225	173	145	133	123	106	78.0
1.70	510	355	280	233	175	146	135	124	107	79.0
1.67	525	365	285	235	178	147	136	125	108	79.5
1.65	530	370	290	237	180	148	137	126	109	80.0
1.60	550	375	293	239	183	149	138	127	110	80.5

Constant Current Discharge Ratings – Amperes @ 77°F (25°C)

Operating Time to End Point Voltage (in hours)

End Point Volts/Cell	.083	.25	.50	.75	1	2	3	5	8	10	12	20	24	72	100
1.90	145	101	68.0	54.7	41.4	25.4	18.5	12.3	8.40	6.95	5.93	3.83	3.24	1.11	0.81
1.85	184	120	77.0	62.3	47.7	28.2	20.5	13.5	9.10	7.60	6.50	4.11	3.45	1.20	0.87
1.80	222	132	85.0	68.0	51.0	30.3	22.0	14.4	9.60	7.98	6.75	4.30	3.61	1.25	0.90
1.75	252	144	90.0	72.1	54.3	31.0	22.5	14.8	9.90	8.14	6.97	4.40	3.68	1.26	0.92

Note: Batteries to be mounted with 0.5 in. (1.25 cm) spacing minimum and free air ventilation. Specifications subject to change without notification.